

Face on Shroud of Turin

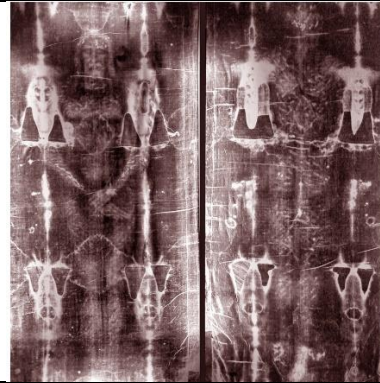


Figure on Shroud of Turin



Type of cross used in crucifixion



Replica 1st Century Roman Crucifixion Nail



Replica Roman Lance used to pierce the right side of the chest



Replica of a Roman flagrum

Replica of 1st Century Roman Crucifixion Nails



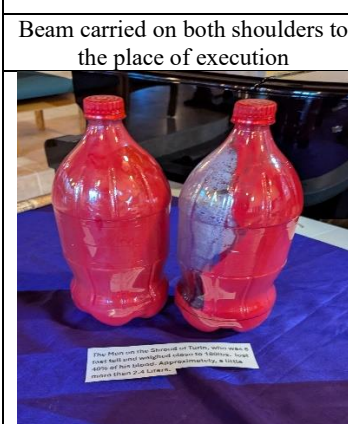
Beam carried on both shoulders to the place of execution



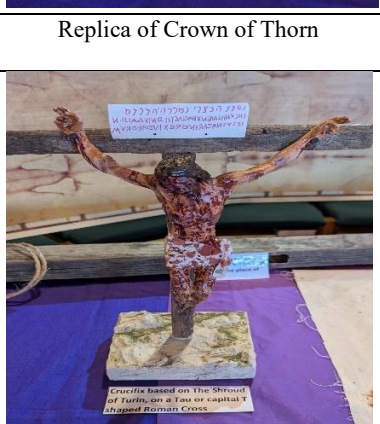
Replica of Crown of Thorn



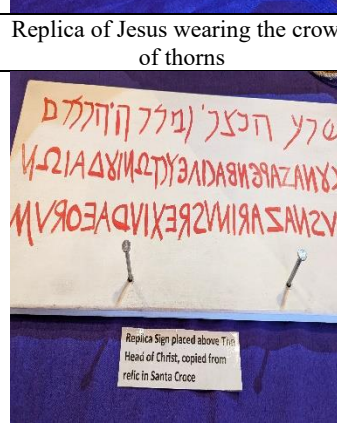
Replica of Jesus wearing the crown of thorns



Man on the Shroud lost 40% of blood, approx. 2.4 liters



Crucifix based on the Shroud of Turin, on a Tau or capital T-shaped Roman Cross



Replica sign placed above head of Christ, copied from relic in Santa Croce



Replica of Jesus in pre-burial chamber with the chin band to keep the mouth closed. Covered in aloe and myrrh before being wrapped in the shroud. Present to Joseph of Arimathea, St. John, and Nicodemus.

Replica of Jesus in pre-burial chamber with chin band to keep mouth closed; covered in aloe and myrrh



Replica of The Burial of Christ in The Shroud

Replica of the burial of Christ wrapped in the Shroud



The Shroud of Turin superimposed over The Original Divine Mercy Image

Original Divine Mercy Image - 1931

Shroud of Turin superimposed over the original Divine Mercy Image